



Snow Policy: All PSC Sites are closed when the Philadelphia Public Schools are closed. Please listen to KYW 1060 for any special closing information.



HOLIDAY DINNER

Friday, December 17
10:00am
Concert by Union League Glee Club: Auditorium

11:30am
Dinner: 1st & 2nd flr Rooms A, B, C, Art Studio, GreenBean Internet Cafe

Enjoy Holiday Dinner with all the traditional trimmings. Advance registration required at the Program Window. For more information call Gladys Rossano at 215-546-5879, ext 209.

On Sale: December 1

COST: Suggested Contribution \$2

HANUKKAH "SPECIAL" TEA TIME

Friday, December 10
3:00pm GreenBean Internet Cafe

Refreshments will be served.

COST: Free



PSC TIoga BRANCH HOLIDAY LUNCHEON CELEBRATION

The Wright Family Singers and Enchante' Cabaret Theater Present HALOS-N-HOLLY

Tuesday, December 21
10:30am – 2:00pm

Seating is going quickly, so act fast!!!!!!!

For reservations please call

215-227-9999.

COST: \$15.00

NEW YEAR'S CELEBRATION

Tuesday, December 28
12:00pm – 3:00pm
Rooms A, B & C



Countdown to the New Year 2010! Lunch will be served at 12:15pm. Party favors, refreshments and music complete with

a countdown celebration and a sparkling toast. Advance registration required at the Program Window.

On Sale: December 1

COST: Silver Member \$8

Standard/ 55+ Member \$10

FIRESIDE PARTY

Thursday, December 23
12:15pm 1st Floor Lobby

Join us for some holiday songs and cheers by the fire, followed by refreshments in the GreenBean Internet Café. Please Note: Lunch will run from 11:00am – 12:00pm. No lunch will be served after 12:00pm.

COST: Free

DRAMA HOLIDAY SHOW & RECEPTION

Tuesday, December 14
1:00pm Auditorium
COST: Free

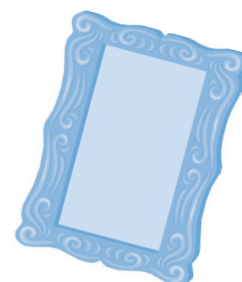
PSC PICTURE DAY "Photo Party"

Tuesday, December 7
10:00am -2:00pm
Room C

Acereel Studio will be here to take your photos. Payment and advance registration is required at the Program Window by Friday, December 3. Holiday and traditional backgrounds to choose from.

COST: \$30

Includes (1)8x10 (2)5x7's & 8 wallets



Please Note: Classes Cancelled & PSC's Closing Dates below:

Thursday, December 16 All Classes Cancelled. Holiday Meal Set-up

Friday, December 17 All Classes Cancelled. Holiday Dinner

Thursday, December 23 Chorus- Cancelled

Silver Sneakers – Cancelled Constitutional Heritage - Cancelled

Friday, December 24 PSC CLOSED (Christmas Holiday)

Friday, December 31 PSC CLOSED (New Years Holiday)

Monday, January 17 PSC CLOSED (Martin Luther King Holiday)

Programs & Events

COMPUTER LESSONS

BEGINNERS INTRO

Mondays, December 13 & 20

10:00am - 12:00pm

LC2 (Computer Lab)

ADVANCED INTRO

Wednesdays, December 15 & 29

10:00am - 12:00pm

LC2 (Computer Lab)

10-week courses starting in January for **Beginners and Advanced.**

Advance registration required at the Program Window, or for more information contact Gladys Rossano at 215-546-5879, ext 209.

"EAT, PRAY, LOVE"

5 WEEK BOOK DISCUSSION GROUP

Fridays, January 7, 14, 21, 28

Friday, February 4

Eat, Pray, Love Movie & Refreshments

12:00pm • Room A



Join Eileen Graham in a lively discussion about one woman's search for everything across

Italy, India and Indonesia. At thirty, Elizabeth Gilbert had everything a modern, educated, ambitious American woman was supposed to want – a husband, a house in the country, a successful career – but was consumed with panic, grief and confusion. *Eat, Pray, Love* is the absorbing chronicle of a year divided between three places where she could examine one aspect of her own nature, set against the backdrop of a culture that has traditionally done that one thing very well. One-time cost for a five-week discussion series.

COST: \$5 (Book Included)

TRINITY CENTER PRESENTS

ASTRAL MUSIC CONCERT

Wednesday, January 19

1:00pm • Auditorium

COST: Free

MOVIN' ON

Tuesday, January 18

12:30pm • LC1

Come join in a lively discussion concerning daily life, health issues, and bereavement, plus your own issues and challenges.

CAREGIVER SUPPORT GROUP

Monday, January 10

1:00pm • LC1

If you are interested in joining or would like more information, please call Michele Watkins at 215-546-5879, ext 259.

CHAT & CHEW

Wednesday, December 15

1:00pm • LC1

Come share your opinions and suggestions about the center while enjoying a snack & a cup of hot brewed coffee with Charles Brown.

COST: Free



PODIATRIST

Wednesday,

December 15

11:00am

Room B

CHAIR MASSAGE

Tuesday, December 14

Tuesday, January 18

11:00am • Lindquist Hall

ADVISORY COUNCIL

Wednesday, December 1

Wednesday, January 5

10:00am • Room A

TOWN MEETING

Wednesday, January 26

1:00pm • Auditorium

LIHEAP ASSISTANCE AVAILABLE NOW

Grant amounts and income eligibility have increased

There's good news for Philadelphia Gas Works' (PGW) customers who need help with their gas bills. Low Income Home Energy Assistance Program (LIHEAP) grants became available beginning November 1 and income levels have changed to include more PGW customers. LIHEAP grants are first-come, first-served, so PGW is urging customers to visit www.pgworks.com/LIHEAP or any one of the company's customer service centers to apply before the grant money runs out.

LIHEAP Cash grants will be applied directly to the "please pay" amount of PGW's Customer Responsibility Program (CRP) customers. So, in addition to the regular CRP discount, LIHEAP Cash grants will reduce the amount CRP customers need to pay. Funds are limited, so customers need to act now before funds run out.

The new 2010-2011 eligibility requirements (160 percent of the Federal Poverty Level):

Household Size	Gross Monthly Income	Gross Annual Income
1	\$1,444	\$17,328
2	\$1,943	\$23,312
3	\$2,441	\$29,296

More information is available at www.pgworks.com/LIHEAP and PGW's LIHEAP hotline, which is 215-684-6100.

Excerpted from PHILADELPHIA GAS WORKS News Release of October 28, 2010

LIHEAP APPLICATION ASSISTANCE CLINIC

Monday, December 6

10:00am • Lindquist Hall

Travel & Dining

CASINO TRIPS

HARRAH'S CHESTER CASINO

Thursday, February 10

Enjoy a day at the casino. We will ride there on our center's mini bus.

Depart: 9:30am

Return: 3:00pm

COST: TBA

TRAVEL TIME

EVELYN GRAVES DRAMA PRODUCTIONS PRESENTS "LET MY PEOPLE GO"

Friday, February 4, 2011

Depart PSC: 10:15am

Return PSC: 2:30pm

A historical musical account of desperate cries for freedom from 1800's to present. Bring your own lunch including a beverage. You will have time to eat before the show begins.

COST: \$11 (Includes Ticket & Transportation)

\$9 (Ticket Only without Transportation)

On Sale: January 3

PHILADELPHIA BELLE

Wednesday, February 09, 2011

Enjoy a Lunch Buffet, cruise, and live entertainment on this paddlewheel-style riverboat.

Depart: 10:30am

Return: 2:45pm

COST: \$55 (with mini bus transportation)

COST: \$46 (without transportation)

ACE IN THE HOLE THEATER PRESENTS

"THAT PHILLY SOUND"

Tuesday, May 17, 2011

Depart PSC: 9:15am

Return PSC: 5:00pm

Enjoy Doo-Wop, R&B, and Soul from the city of Brotherly Love. Cost includes Round trip motor-coach transportation, one hour open bar, family-style luncheon and the show at Royal Manor, tax & tips included.

Deposit: \$25

COST: Silver Members \$80

Standard/55+ Members \$85

On Sale: December 15

SAN FRANCISCO & LAS VEGAS

March 31 – April 7, 2011

Enjoy three nights in San Francisco and four nights in Las Vegas.

Deposit: \$100

Final payment due:

December 30, 2010

Cost for ground package

(double occupancy):

\$630 Silver Members

\$635 Standard/55+ Members

Air Fare & Single Room rates at additional cost

On Sale: Now

LAS VEGAS

April 3 – 7, 2011

Love Vegas, but don't want to go to San Francisco? Join your fellow PSC travelers for just the Las Vegas portion of the journey.

Deposit: \$100

Final payment due:

December 30, 2010

Cost for ground package

(double occupancy):

\$220 Silver Members

\$225 Standard/55+ Members

Air Fare & Single Room rates at additional cost

On Sale: Now

CAMP LADORE

May 9 - 13, 2011 Five Days/Four Nights

Enjoy a relaxing stay, or a busy, fun stay - the choice is yours. The Salvation Army's beautiful Ladore Conference Center is in Waymart, PA - all meals included.

\$50.00 Non-Refundable Deposit.

Final Payment Due: April 5, 2011

You must have your roommate or their deposit at time of sign up.

COST: \$243 Silver Members (double occupancy)

\$249 Standard/55+ (double occupancy)

On Sale: Now

RENFO VALLEY, KENTUCKY

May 19 - 23, 2011

Enjoy five days and four nights in Renfo Valley, Kentucky. The valley is alive with the sound of music. This fantastic show package includes six exciting shows highlighting bluegrass, legendary entertainers, old time pop and gospel music. Please contact Gladys for more information.

Deposit: \$50

Final Payment Due: March 4, 2011

COST: \$575 Silver Members (double occupancy)

\$580 Standard/55+ Members (double occupancy)

CAPE COD, MASSACHUSETTS

September 12 - 16, 2011

Enjoy five days and four nights in Cape Cod, Massachusetts. The trip includes tours of Hyannis, Chatham, Provincetown, a visit to JFK Museum, a Harbor Cruise, Nantucket Island, and eight meals, including New England lobster dinner. Please have your roommate present with you when you sign up.

Deposit: \$50

Final Payment Due: June 17, 2011

COST: \$609 Silver Members (double occupancy)

\$614 Standard/55+ Members (double occupancy)

DINING AROUND

RED LOBSTER

Wednesday, January 12, 2011

Depart PSC: 10:15am

Return PSC: 2:30pm

Enjoy lunch on your own!

Cost: \$5 (Transportation Only)

On Sale: Dec 1



509 South Broad Street
Philadelphia, PA 19147
215-546-5879

Tioga Branch
1531 W. Tioga Street
P.O. Box 100 • Philadelphia • PA 19140
215-227-9999

Coffee Cup Branch
Asian Pacific Senior Resource Center
247 South 10th Street
Philadelphia • PA 19107
215-627-8048

www.philaseniorcenter.org



United Way
of Southeastern Pennsylvania
Community Partner

PSC Donor choice
#000095

Philadelphia Senior Center is funded by the Pennsylvania Department of Aging, the Philadelphia Corporation for Aging, the United Way, corporations, foundations and individuals.

Volunteer Opportunities

BROAD STREET MINISTRIES SILVERWARE WRAPPING PROJECT

Monday, December 13
Monday, December 27
Monday, January 10
Monday, January 24
1:00pm-3:00pm

Art Studio

Help wrap silverware for the Broad Street Ministries' community dinners.

BOOSTER CLUB MEETING

Wednesday, December 1
Wednesday, January 5
12:45pm-1:45pm
Lindquist Hall

Come learn about how to become involved in helping out at the center and surrounding community! A chance to meet & network with other active members of PSC!

STUFF HOLIDAY GIFT BAGS FOR CHILDREN!

Wednesday, December 1
2:00pm-3:00pm
Thursday, December 2
10:00am-12:00pm
Friday, December 3 1:00pm-3:00pm
All in LC1

The Police Athletic League of Philadelphia has asked for PSC's help in stuffing 500 small gift bags with small favors like candies & pencils! Each year PAL hosts multiple holiday parties with the support of corporate sponsors. The children will enjoy pizza, arts and crafts and gifts. PAL Police Officers will distribute presents to over 500 children, many of whom may be opening their only gift of the season.

TRIM THE TREE PARTY

Friday, December 3
10am-4pm Lunch break from 12-1pm
Come help decorate PSC for the holidays! Snacks and drinks will be provided as we spruce up the center with holiday cheer!

MANNA

Monday, December 6/Wednesday, January 19
10am-12pm 9:30am departure from PSC

Volunteers will be preparing and packaging foods for people at acute nutritional risk from life-threatening illnesses. Depart from the PSC 1st Floor Lobby and take SEPTA to 2323 Ranstead. RSVP PREFERRED.

GREEN TEAM MEETING

Wednesday, December 8/Wednesday, January 12
9:45am-10:45am • Back Dining Room Table of GreenBean Internet Café

Come learn about PSC's Senior Green Team and our efforts to promote positive environmental practices, as well as share tips on how to save money, time, and resources!

AIDS FUND VOLUNTEERING

Thursday, December 9/Thursday, January 13
10:30am-1:30pm

Volunteer with us by stuffing bingo packets for the AIDS Fund's GayBINGO! event. Depart from PSC 1st Floor Lobby by 10:00am to go to the William Way Center. RSVP PREFERRED. A small lunch will be provided to the participating volunteers at PSC afterwards.

